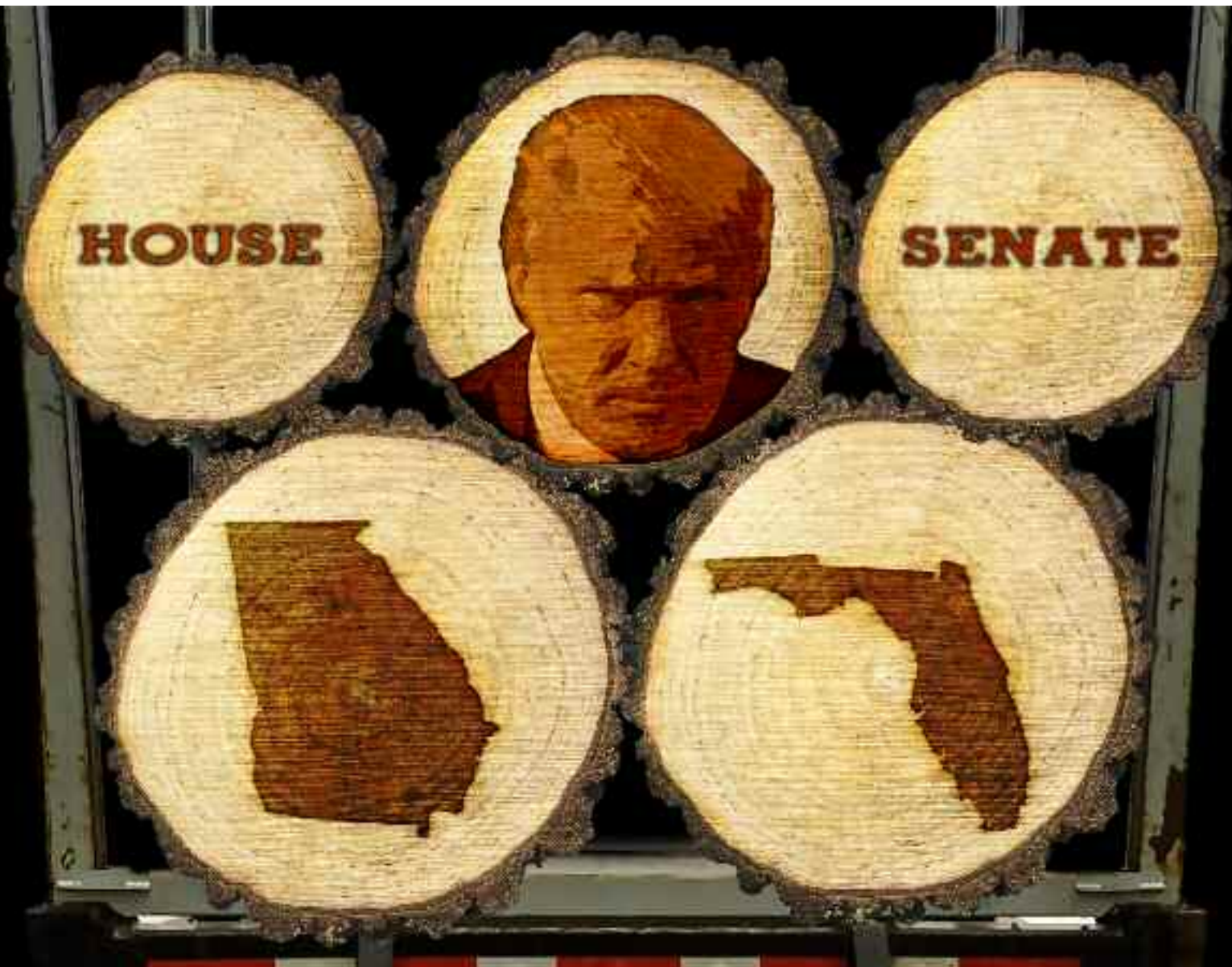




# ut of the Woods

"Voice of the Southeastern Wood Producers Association" Volume 27 Issue 4 2016



***MAKE AMERICA GREAT AGAIN!***  
**LESS REGULATION! LOWER TAXES!**





**Tough  
Dependable  
Economical  
Powerful  
Service**

 **BARKO**



**KNIGHT  
FORESTRY**  
Whigham, Georgia  
229-762-3500

 **Quality**  
Equipment & Parts, Inc.  
Lake City, Florida 32055  
386-754-6186

**BARKO HYDRAULICS, LLC**

# DIRECTOR'S MESSAGE

NOV/DEC 2016  
Executive Director  
Tommy Carroll



## Renewed Hope for the American Dream.

The American Dream is defined as a set of ideals (democracy, rights, liberty, opportunity, and equality) in which freedom includes the opportunity for prosperity and success, and the upward social mobility for the family and children, achieved through hard work in a society with few barriers.

On November 8, 2016, the working people of the United States voted for change in government at all levels. Of course, the biggest story is the election of Donald Trump as president while holding the majority in the United States Senate and House of Representatives. Why is this important to logging companies?

In a survey, currently being conducting with the SWPA members, they are asked to list the five topics of concern that their company faces moving forward. Here are some of the comments so far.

The dominant response so far is the inability to make profit that fits into future business planning. Income received from timber harvesting has not kept pace with rising costs leaving companies uncertain of whether to invest more in their operations or just try and sustain what they have. One driving issue in this challenge is the continued growth of laws and regulations of which compliance leads to higher business costs.

Insurance costs, especially truck insurance, has reached a crisis point not only with rising premiums but for some companies an inability to find coverage from any source. With trucking being already one of the weakest legs of the timber harvesting business, if unresolved could have a negative impact to the overall forest products industry. If this happens, the rippling effect could be a reduction in state revenue if the wood fiber supply side cannot meet the demand side.

Another point of concern revealed in the survey is the inability of companies to hire dependable labor. The logging companies today use sophisticated and expensive machinery to harvest wood fiber and need competent and dependable operators. Maintaining a drug free workplace has become more difficult than in the past. Also included are dependable and qualified truck drivers that affect the public image of logging and expose their employers to significant liabilities while driving log trucks.

Over the last eight years there has been much criticism of the federal government with regards to supporting small businesses such as logging companies. Based on my

discussions along with others it is very clear that logging company owners supported the Republican Party in this election hoping that some of the issues discussed in this article would be addressed and positive solutions discussed and implemented. Those elected and reelected need to be held accountable for the commitments made to assist small business companies and middle class America. On the other side these companies need to be clear on what solutions are needed to repair their segment of the economy.

Please take the time to discuss with your legislators what government actions have financially impacted your business, and once again be clear and supply them with tangible proof and not just accusations and opinions. The SWPA is a good platform to help accrue and organize this data. Do not hesitate to share your issues and solutions. Although still not perfect, a great opportunity for government to support the working people is now in place. Let's make the most of it.

As always, if Pam and I can help you in any way, please do not hesitate to contact us.



---

*“Every morning, I get up and look through the ‘Forbes’ list of the richest people in America. If I’m not there, I go to work.”*

— **ROBERT ORBEN**

---

*Tommy Carroll is the Executive Director of the Southeastern Wood Producers Association, Inc., which represents logging professionals in Georgia and Florida. The SWPA Inc is headquartered in Hilliard, Florida. For more information please contact us at (904) 845-7133 or you may contact Tommy directly at (478) 952-2809. website: [www.swpa.ag](http://www.swpa.ag) Tommy's email: [tcarroll@swpa.ag](mailto:tcarroll@swpa.ag)*



# LOWER OWNING AND OPERATING COSTS



## THE CAT® C-SERIES WHEEL FELLER BUNCHER

Even with the more powerful Cat® C7.1 ACERT™ engine, field data and customer input have shown a 7% reduction in fuel consumption (gal/hr) and a 13-16% increase in fuel efficiency (ton/gal). You'll burn less fuel and get more power because of Caterpillar's advances in engine technology and machine design. This includes more power generated at lower rpm and an on-demand cooling fan that only spins when needed and, therefore, draws less engine power.

The Cat C-Series Wheel Feller Buncher is available exclusively through your Florida and Georgia Dealers. Contact your local dealer today to learn the full story on lower operating costs.



[www.cat.com/forestry](http://www.cat.com/forestry)

Ring Power 

RING POWER CORPORATION  
[www.ringpower.com](http://www.ringpower.com)  
ST. AUGUSTINE, FL  
904-731-7730

YANCEY 

YANCEY BROS. CO.  
[www.yanceybro.com](http://www.yanceybro.com)  
AUSTELL, GA  
800-282-1562

© 2012 Caterpillar. All rights reserved. CAT, DIEFFELM, and related logos, "Caterpillar" and "Power Edge" trade dress as well as corporate and product identity and marks are trademarks of Caterpillar and/or its subsidiaries. All other marks are the property of their respective owners.



# Contents

## REGULAR FEATURES

SWPA - Director's Message . . . . . 3  
 From Our President . . . . . 6  
 American Loggers Council . . . . . 14  
 SWPA Safety Pages . . . . . 16-17  
 Out of the Woods Advertisers Index . . . . . 27  
 Membership Information . . . . . 28

## FEATURE ARTICLES

Georgia Forestry Commission - Director's Corner . . . . . 8  
 Florida Forest Service - Director's Desk . . . . . 9  
 Bart Allen Memorial Scholarship Application . . . . . 10-11  
 2017 Logger of the Year Nomination Form . . . . . 20-21

## INSERTS THIS ISSUE:

- 1. 2017 Sticky Calendar



**SWPA Southeastern Wood Producers Association Inc.** is the voice of timber harvesting professionals in Florida and Georgia since 1990. The association exists for the sole purpose of furthering the timber harvesting profession through advocacy and services provided to our membership.

### OUR MISSION

- Establish a positive public image of wood producers
- Provide quality continuing logger education
- Encourage responsible harvesting practices
- Be the leading advocate for timber harvesting professionals in Georgia and Florida
- Report news and economic data
- Monitor workers compensation & other business insurance issues

Director: Tommy Carroll

Publisher: SWPA Inc.

P:(904) 845-7133

F:(904) 845-7345

WEB: www.swpa.ag

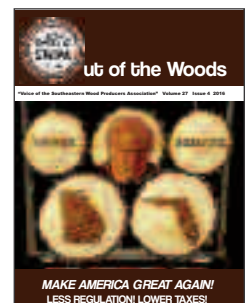
"Out of the Woods" distributed quarterly.



**ARE YOU PAYING THE LOWEST PRICE POSSIBLE**

**FOR TIRES AND FILTERS?**

**...YOU SHOULD BE BUYING FROM SWPA PURCHASE PARTNERS!**





## From Our President

With the election over and Donald Trump making plans to take his place as president, I hope he can do what he said he would do and make America great again. After eight years under a liberal president it seems our country has a lot of ground to cover to undo the mistakes made by our leaders. The state of our country does not look too good right now, but I am optimistic that we have a President that is for the small business owner.

One topic I want to bring up in this letter is truck insurance. Two of my trucking contractors told me this week that their insurance went up so much that they are going to sell their trucks. This isn't an idle threat because one of them has already sold one and the other one is parked and is advertised in a truck magazine. This is largely because of CSA scores. One contractor had his insurance canceled abruptly and the other was told his policy would not be renewed in January. Their monthly rates went from \$600.00 to \$2400.00. We have told each other that one day insurance would get so high that we would not be able to afford it. That day is now. I know we can say it's their own fault but the truth is that truckers don't make the money or have the time they need to properly maintain their trucks. As a matter of fact, loggers don't have enough money or time to properly maintain our equipment either.

I have been working on a way I can be more profitable in my logging company and I'm pleased to say it's working for me. I will soon be ready to share with you what changes I made by standing in front of you in a continuing education class. This system has worked for me and I want it to work for you. I have talked to many industry leaders about this change and all of them are on board and are just as excited as I am that this may be the answer we have been looking for.

The Southeast Wood Producers Association is full of people that have worked in the past and are still working to make logging better for owners. The sad thing is that with all the things we have accomplished for our industry, many loggers do not support SWPA. I hope you will talk about this article among yourselves and generate as much excitement as possible because I believe things are going to get better for us this year.

John Lane, Coastal Logging Co. Inc.

315 Grants Ferry Road

Brunswick, Georgia 31525

## The Southeastern Wood Producers and Georgia Forestry Association Held a Joint Meeting

On October 27, 2016, the Southeastern Wood Producers Association and the Georgia Forestry Association held a cooperative meeting in Richmond Hill, Georgia. This is the first time the two organizations have joined together in such an event.

Tommy Carroll, SWPA Executive Vice President and Director, and Andres Villegas, GFA President and CEO both presented short programs to an audience of private landowners, industry managers and logging contractors.

The theme of the meeting was "Forestry Forward" and centered on the dynamic state of the industry in Georgia with population growth blending in with the sustainable efforts to keep the forest products industry and one of the top revenue producing industries in Georgia.

Both organizations plan to work together to conduct more of these meetings in coming months to other areas of Georgia.

Davis-Garvin Insurance Agency sponsored this meeting.



## SWPA Executive Officers 2016 - 2018

**President: John Lane**  
**Coastal Logging Co Inc**



John Lane's childhood memories stem from working in the woods on his father's logging crew. Growing up in the industry made it easy for him to begin his own business in 1981. He and his wife Donna started Coastal Logging Co from humble beginnings and today it has grown to a three crew operation. John's son, Johnny, and his wife Sarah are active in the business as well and represent the fifth generation of the Lane family in the timber industry. John also and serves in the national logging association, the American Logger's Council, as SWPA's representative, within the Georgia Forestry Association as well as the Glynn County Forestry Commission. John stated that he got involved because: "I felt it was my responsibility to become more active in issues that affect loggers and the future of the logging industry."

**Vice President: Scott Gies**  
**Gies Timber & Land Inc.**



Scott first joined the SWPA after leaving the consuming side of the industry to establish a logging business in early 2007. He was elected to serve as a Board member in 2010. Scott's harvesting operations are primarily in northeast Florida and southeast Georgia. He is married to Sheila Gies and has a daughter, Jennifer Hale (husband Clint Hale), granddaughters Ella and Anna, a son Douglas and a daughter Kelli. Scott was also a Florida Logger's Council member of the Florida Forestry Association. When asked why he serves loggers as an SWPA Board Officer he said: "I feel that it important for those of us in the timber harvesting profession to have a unified voice. We are the ultimate stewards of the forest, and unless we as group make this known there is an assumption that we are not. By serving the members of the SWPA it is my hope to help get this message out to the public at large."

**Secretary-Treasure: Russell Fowler**  
**Flint River Timber of GA, Inc.**



Russell received a B.S. in Forest Resources in 1988, then started his career in the industry working for G.P. and the former Stone Container in the Big Bend of Florida and southwest Georgia. His exposure to the industry in the early 90's, along with its changes, led to the founding of a private wood dealership, Flint River Timber in Cairo, GA. The buying and selling of wood developed into investment in the logging business. The support of sub-contractors and company owned logging crews is vital to the success of a modern day timber dealership. Russell has always supported loggers and feels communication between forestry associations, the public and the industry is essential. Involvement with the SWPA is the most important link in accomplishing this task.

**Past President: Richard Schwab**  
**MA Rigioni Inc.**



Richard Schwab began working with the family business, M. A. Rigoni, Inc., Perry, Florida, in 1990. He worked his way up within the organization as an equipment operator in the woods, to a mechanic, to managing a crew in 1992. From 1992 to 1995 Richard worked as crew foreman. From 1995 to present Richard has been responsible for procurement and new business development for all of the company crews and contractors. MA Rigoni operates three crews, a couple of private contractors, and a land clearing crew. Richard accepted a leadership role in the SWPA in the Fall of 2008 because "he is passionate about the logging industry and wants to do as much as possible to make a difference." Richard said, "I realized that unless we speak up for ourselves as a unified industry we are allowing others to control our destiny."

**Executive Director: Tommy Carroll**  
**SWPA Inc.**



Tommy Carroll, Executive Director of the Southeastern Wood Producers Association (SWPA), has 37 years of experience in the timber harvesting industry. This includes 10 years with Union Camp Corporation working as crew foreman on company timber harvesting crews and later as a wood yard manager. For the next 15 years, Carroll was employed by Canal Wood Corporation as Harvesting Compliance Coordinator. The primary focus of this position placed an emphasis on safety and environmental compliance programs with Canal's timber harvesting contractors and company facilities throughout the south eastern and mid-western United States. Carroll began work for the SWPA in 2001 first as Education Director and became the Executive Director in 2007. Carroll served as chairman of the Georgia Forestry Association's Logging and Transportation Committee from 1996 to 2000 and currently sits on Georgia's SFI Statewide Implementation Committee and Logger Education Committee.



# The Director's Corner

## Georgia Forestry Commission

Robert Farris, Director

### DROUGHT

Talking about the drought isn't just for foresters and weather forecasters anymore. The lack of rain has gotten the attention of a lot of people in Georgia and the Southeast, and a big jump in wildfire activity is searing that reality into the collective consciousness.

It's ironic that even as we deal with dusty roads and hissing fires, we still must plan ahead for anything that Mother Nature has in store. Of course we're all hoping that's water - and lots of it!

The GFC recently wrapped up the portable logging cost share program, in which we cost shared with various wood dealers and loggers throughout the state to build 20 portable bridges for 12 separate entities. Those bridges are now in rotation, and will be used by multiple loggers on multiple forestry operations over time. The latest Best Management Practice (BMP) Assurance exams confirm portable bridges help improve BMP Implementation scores for stream crossings. As these bridges are seen and used more frequently, BMP Implementation scores should continue to improve, and thereby help to further protect water quality.

Georgia Forestry Commission Water Quality Program Coordinator Scott Thackston says, it's critical to remember that during extremely dry times, small streams can dry up and may not be recognized as streams. However, such streams still need the appropriate Streamside Management Zones (SMZs) applied during all forestry operations. This applies to all streams, both intermittent and perennial. Ponds and lakes should also be treated with the appropriate SMZs. Care should be taken to use all appropriate BMPs when crossing or operating in the vicinity of any streams, ponds, ephemeral areas, gullies, canals/ditches, and/or floodplain features. While these areas may be dried up or nearly dried-up during specific moments in time when dry weather conditions exist, all BMPs still apply during any forestry operations.

The GFC water quality team is gearing up for the 2017 Forestry BMP Survey in Georgia, which will launch in January. Potential survey sites are now being collected and we're working to secure landowners' permission to have access to their property. A number of forest activities will be inspected during the survey, including roads, stream crossings, SMZs, special management areas, harvesting, equipment servicing, mechanical/chemical site prep, planting, and firebreaks/burning, to name a few. The goal is to fully inspect 200 to 250 forestry sites statewide. We'll use random sites from all across the state from all ownership classes (NIPF, corporate, and public) for all types of forestry activities and categories. The sites will be scored by GFC Water Quality staff and documented for the 2017 survey.

Thanks for all you do to keep our forests prolific, healthy and sustainable. They wouldn't be that way without you!

GEORGIA FORESTRY  
COMMISSION





# The Florida Forest Service

## Director's Desk



*Jim Karels, State Forester*

### **Reforestation Cost Share Program Aims to Boost Florida's Working Forests**

Private forests encompass 63 percent of Florida's landscape and support more than 78,000 jobs. These jobs provide economic stability for many rural communities and the State of Florida as a whole. Forests also provide carbon storage, wildlife habitat and water resource protection valued at approximately \$3,300 per acre. The water resource value alone is significant in that forests provide major recharge potential for watersheds and springsheds throughout the state. These valuable forest benefits, however, are at risk. According to the Forest Inventory and Analysis (FIA) data, the acres planted (to pine trees) in Florida has steadily fallen for a number of years.

According to the 2015 Comprehensive Statewide Forest Inventory Study, both northeast and northwest Florida must reforest more acres to sustain the jobs and economic impact provided by Florida's working forests. Managed forests require large upfront capital investments and offer few early returns for landowners, with many risks and costs throughout their life cycle. In an effort to offset these challenges for landowners, the Florida Department of Agriculture's Florida Forest Service is pursuing \$3 million in budget authority for "reforestation" projects in fiscal year 2017-18. These dollars will assist forest owners in North Florida with a 50/50 cost-share program to help fund site preparation, tree seedlings and tree planting, and provide for prescribed fire and invasive species control.

#### **The program will be broken up into two distinct initiatives:**

1. Reforestation for landowners; and
2. Conversion of intensive agriculture to forest production in critical watersheds/springsheds (aforestation)

It has been documented that intensive agriculture has a higher potential to export nutrient loads when compared to the equivalent acreage of forestland. Therefore, the "aforestation" initiative of the program is essential in critical watersheds/springsheds. Depending on site-specific factors such as soil and drainage conditions, converting land use from intensive agriculture to forestry could reduce nutrient loading by 4 to 16 pounds of total nitrogen, and 2 to 3 pounds of total phosphorus, per acre every year. Addressing this concern is critically important for Florida as we continue to battle water quality issues related to nutrient enrichment.

In addition to nutrient-load reduction, the conversion from intensive agriculture to forestry would reduce irrigation requirements, and hence reduce the gallons of water pumped from the aquifer. Although irrigation requirements for intensive agriculture can vary depending on rainfall, site conditions and types of agriculture, silviculture typically requires no irrigation regardless of site conditions. Converting intensive agriculture in critical watersheds/springsheds to forest would also provide additional green space, which would increase landscape connectivity for a variety of wildlife, including Threatened and Endangered species, as well as recreational opportunities. This non-structural approach to nutrient source control would be cost-competitive with structural controls, and would not obligate the state to long-term operation and maintenance of control facilities.

Stay tuned as we enter the 2017 legislative session in Florida, with high hopes and support for this critically important program for forestry and the State of Florida.



## **SOUTHEASTERN WOOD PRODUCERS ASSOCIATION**

### **BART ALLEN MEMORIAL SCHOLARSHIP 2017**

PO Box 9Hilliard, Florida 32046  
(904) 845-7133 Fax: (904) 845-7345  
Email: [scholars@swpa.ag](mailto:scholars@swpa.ag)

**SCHOLARSHIP APPLICATION DEADLINE: APRIL 15, 2017**

***ATTENTION: SWPA's ability to award these scholarships is dependent upon funding!***

***Please send in a DONATION to fund these scholarships by April 15, 2017.***

***Call SWPA at 904-845-7133 for more information.***

SWPA is pleased to announce that SWPA will be awarding two (2) \$1,000.00 college scholarships and two (2) \$500.00 college scholarships for eligible 2017 and one \$500.00 scholarship will be awarded to eligible Florida recipients and one \$1,000.00 and one \$500.00 scholarship each will be awarded to eligible Georgia recipients. This scholarship was established in 2001 in memory of Bart Allen, the son of Joe and Marion Allen, who was tragically killed on August 22, 2001.

If you are a member of SWPA in good standing and have a qualifying recipient interested in one of these scholarships, please complete and return the application or call the SWPA office at (904) 845-7133. In addition to a complete application, a letter of recommendation and a short essay as to why the applicant feels he or she is the best candidate must be attached. Winners will be required to submit a photograph for use in SWPA Publications including: "Out of the Woods", [www.swpa.ag](http://www.swpa.ag) and possible press releases. In addition, scholarship recipients selected are required to submit proof of college registration to in order to receive their scholarship funds.

Please don't delay! The applications and supporting documentation must be received by SWPA no later than April 15, 2017. We would like to make an award at their respective high school graduation or awards day if time allows and the winners will also be recognized at the 2017 SWPA Annual Meeting.

**EACH YEAR DONATIONS TO THE BART ALLEN MEMORIAL SCHOLARSHIP FUND MAKE THIS PROGRAM POSSIBLE. THE BOARD OF DIRECTORS WOULD LIKE TO THANK ALL THAT CONTRIBUTED TO THE BART ALLEN MEMORIAL SCHOLARSHIP PROGRAM.**

**CONTRIBUTIONS ARE NEEDED TO MAKE SURE THIS CAN CONTINUE TO PROVIDE SCHOLARSHIPS TO DESERVING MEMBER FAMILIES PLEASE CONTACT US AT 904-845-7133 AND ASK ABOUT HOW YOU CAN DONATE TO THIS WORTHY PROGRAM.**



**SOUTHEASTERN WOOD PRODUCERS ASSOCIATION  
BART ALLEN MEMORIAL  
SCHOLARSHIP APPLICATION**

**BAMS APPLICATION DEADLINE: April 15, 2017**

**CHECK One:**

\$1,000 GA     \$500 Assoc. GA  
 \$1,000 FL     \$500 Assoc. FL

**Name in full:** \_\_\_\_\_ **Date of Birth:** \_\_\_\_\_

**Home Address:** \_\_\_\_\_ **Home Phone:** \_\_\_\_\_

**Parents' or Grandparents**

**(Qualified SWPA MEMBER Name)** **Name:** \_\_\_\_\_  
**Address:** \_\_\_\_\_ **City:** \_\_\_\_\_ **ST/Zip** \_\_\_\_\_

**Member Relationship:**                      **Parent**                      **Grandparent**

**Graduation Date/Time:** \_\_\_\_\_ **Location:** \_\_\_\_\_

**(If Applicable ) Awards Night Date/Time:** \_\_\_\_\_

**Name & Phone No. for High School Guidance Office:** \_\_\_\_\_

**ACADEMIC  
RECORD:**

**High School Name** \_\_\_\_\_

**Address** \_\_\_\_\_ **City** \_\_\_\_\_ **State** \_\_\_\_\_ **Zip** \_\_\_\_\_

**High School GPA** \_\_\_\_\_ **Class Rank** \_\_\_\_\_ **Graduation Date** \_\_\_\_\_ **Scores: SAT** \_\_\_\_\_ **ACT** \_\_\_\_\_ **Other** \_\_\_\_\_

**University and/or College you will be attending\*** \_\_\_\_\_

**Anticipated date of enrollment** \_\_\_\_\_

**Summarize your high school achievements and activities. (Attach additional documents please).**

**(a) Honors and Awards**

**(b) Extracurricular Activities**

**(c) List all work experience and your responsibilities**

**(d) Attach a short essay as to "Why you feel you are the best candidate" to receive this scholarship**

**(e) Attach Letter of Recommendation.**

**I certify that all the above information on this application is true, correct and complete to the best of my knowledge.**

**Signature:** \_\_\_\_\_

*Form can also be found on [www.swpa.org](http://www.swpa.org) Look for a link to "Bart Allen Memorial Scholarship" from the home page*

# MAXI-LOAD PLATFORM SCALES

(Professional Grade)



**Rebate Program for SWPA Members**

Wireless  
Durable  
Compact & Easy to Move



**If You can Load There – We can Weigh There**

- ♦ All weather conditions
- ♦ All Ground conditions
- ♦ 17 Years of Proven Performance

**Put Your Truck Weights within 1% of Mill Scale**

- ♦ No Light Loads
- ♦ No Overweight Penalties
- ♦ Maximize Trucking Income

**2 Year Warranty**

**[www.maxiload.com](http://www.maxiload.com)**

**[sales@maxiload.com](mailto:sales@maxiload.com)**

**1-877-265-1486**

Specializing in Forestry, Logging, Wood Products, & Agriculture since 1985.



**BATES HEWETT & FLOYD**  
INSURANCE AGENCY

**3400 Crill Ave. Suite 2**

**Palatka, FL 32177**

**Phone: 386-328-1100**

**Fax: 386-329-1100**

**Toll Free 1-800-375-LOGS(5647)**

**Buddy: [buddy@bates-hewett.com](mailto:buddy@bates-hewett.com)**

**Buddy Mobile: 386-546-9756**



**Buddy Evans & Chris Lands**  
Agents

## SWPA TRANSPORTATION MARKETPLACE:

### Wanted

**Big Cypress and Oversized Pine Logs**

**Cracker Style Log Homes & Sawmill**

**Williston, FL**

**Contact: Bubba 352-529-2070**

*SWPA has no responsibility or liability for any activity related to information provided or any services provided as a result of these listings.*

**PLACE YOUR  
MARKETPLACE AD  
HERE.**

**CONTACT SWPA: 904-845-7133**



**THE FACT IS...  
SWPA CANNOT MAKE YOUR VOICE HEARD  
WITHOUT YOUR HELP.**

**WANT TO HELP?  
DONATE TO THE  
SWPA LOGPAC FUND**

**DONATE DIRECTLY: CALL 904-845-7133  
- OR -**

**VISIT THE SWPA APPAREL STORE ONLINE**  
*CLICK ON THE LINK TO THE SWPA STORE ON WWW.SWPA.AG  
PROCEEDS FROM ALL PURCHASES BENEFIT THE SWPA LOGPAC*

Ross Ferrell  
Owner

www.ferrelltimber.com



**FERRELL**  
TIMBER & SITE PREP, INC.

Ph: 912-281-4238      ferrelltimber@gmail.com



**LANE & COMPANY**

**CLARK LANE**

302 W Ogeechee St., PO Box 158  
Sylvania, Ga 30467

Ph: 912-664-4744    Fax: 912-664-0378    Call: 912-547-8401

www.lanecompany.com

**INSURANCE SOLUTIONS**  
AGRI/BUSINESS    COMMERCIAL    PERSONAL LINES    LIFE    HEALTH

**FMCSA CERTIFIED**

MEDICAL EXAMINER

**DOT PHYSICALS**  
\$60.00

DR. OSCAR J. DELL, JR, D.C.  
912-285-2035    MON-FRI. 9-12 & 2-5  
1223 ALICE STREET, WAYCROSS, GA  
WALK-INS WELCOME - SATURDAY BY APPOINTMENT  
SWPA MEMBER



Covering:  
North Carolina  
South Carolina  
Virginia  
Northern Georgia

4600 Reagan Drive, Charlotte, NC 28206  
1-877-875-9616 - Fax: 704-596-6681

**Steve Ford**  
Sales Manager  
Mobile: (704) 618-0402  
Email: stevef@dwotc.com

www.trelansoutheast.com



## Happy Holidays



It is always difficult to try and speculate what might happen between the time that this editorial is written and then goes to print 30 to 45 days later, and this is one of those particularly difficult times when the elections have been held and yet as of this writing we do not know the outcome.

Regardless, we will have to work with whatever President and administration that is elected, and our issues will not go away simply because one political party defeated the other in the Presidential race. Let's just hope that whomever is elected will listen to the will of the people and place their values and needs over that of any party.

As you read this, the staff of the American Loggers Council has already made plans to visit DC in mid-December to get an idea of what the transition might look like from one administration to the next, and to see if there is a better opportunity to work across the aisle in completing legislation in the 215<sup>th</sup> Congress set to begin work in January.

Just because the American Loggers Council is working for you, doesn't mean that you shouldn't be involved in what's happening. Regardless of the results in the November election, we need all hands on deck with loggers engaged at the grassroots level to get the policy changes we need and ensure our industry is prosperous for the future.

We have many issues to deal with for the industry, including truck weight reform on the Federal Interstate Highway System, attracting and retaining employees to the logging and log trucking industry, working to develop and support markets for the products and services we provide, and ensuring that our Federal Timber lands are sustainably managed to support a viable timber sale program that would help the many timber dependent communities across the Nation.

While these are some of the issues, we know that there will be many more to contend with in the future as we strive to tell our story to the public where they will have a better understanding of what we do and why we do it. Here at the American Loggers Council, we will do our best to keep the public informed of your professionalism in harvesting timber and dedication to protecting the environment as you continue to provide the fiber that is consumed on a daily basis by those that do not know its true source or the people that work tirelessly to provide it.

Many of you will be able to be with family and friends this Christmas, and it is justifiably right that you, as a member of this invisible industry, come out of the woods and take the opportunity to enjoy the companionship and fellowship of those that appreciate what you do and keep you going.

God bless, and have a Safe and Merry Christmas!

Log safe!

*Danny Dructor is the Executive Vice President for the American Loggers Council with offices near Hemphill, Texas. The American Loggers Council is a 501 (c)(6) not for profit trade organization representing professional timber harvesters in 32 states across the United States. If you would like to learn more about the ALC, please visit their web site at [www.amloggers.com](http://www.amloggers.com), or contact their office at 409-625-0206.*





# ***RUGGED AND SMOOTH? TRANSMISSION ACCOMPLISHED.***

Mechanical transmission (gold)  
with hydrostatic assist (silver)

**Introducing the Continuously Variable Transmission.** The forest is hard on transmissions — and loggers. That's why every L-Series Skidder from John Deere features our exclusive CVT. The CVT is a mechanical transmission providing all the rugged power the job demands, with a hydrostatic assist for smooth, easy operation. By automatically adjusting output torque, it provides maximum power to the ground — without manually shifting gears. And by maintaining a constant engine speed, it improves fuel economy, reduces engine wear and extends transmission life. Just one more example of how we're changing the logging game. At John Deere, We're For Loggers.



**JOHN DEERE**

[JohnDeere.com/GameChangers](http://JohnDeere.com/GameChangers)





## Bucksaw Safety

JJ Lemire

Recent deaths and injury have involved employees being struck with objects thrown from the saw and most were a result of poor set-up. Catastrophic injury or death can result from saw chain failure and this is a maintenance issue.

**What must an employee know:** Mechanical log bucking has been a tremendous gift to our industry since it has eliminated ground personnel and has greatly reduced great risk. While the bucksaw can reduce the risk on our jobs, it can also be a very dangerous tool should a malfunction take place. Bucksaw safety can be broken down into two areas: positioning the bucksaw and maintenance.

### SAFE SET-UP

- The bucksaw should be set up pointing away from the busy deck or landing area.
- The loader operator must be “out of line” of the bar and chain unit.
- Loader doors and windows must remain shut while the saw is being operated.
- Never engage the saw if machinery or people enter the “No Zone”!
- All lock and tag out procedures shall be followed during maintenance times.

### MAINTENANCE

The bucksaw is basically an “over grown” chainsaw. Basic bar and chain maintenance should be followed to avoid saw chain failure, which could result in an injury. A broken link of 11 BC chain proves to be a very lethal

projectile. If the chain doesn’t break, there is no accident!

- Make sure the saw chain is sharp. A dull chain causes undo wear to other chain components, sprockets and guide bars. Above all it is inefficient.
- Frequently inspect all chain components, which include rivets, drive links, and side straps. Check for excessive wear, cracks, or broken rivets. The chain must be put “out of service” until repairs can be made.
- Inspect drive sprockets and roller sprockets. Worn sprockets cause damage to drive links and the chassis of the saw chain.
- Inspect the guide bar for wear. Bar rails must be true. File or grind burrs from the bar. A true bar will allow the saw chain to cut straight.
- Use a good quality bar and chain oil, this will help to reduce friction, and add to the life of the bar and chain. Do not use discarded motor oil.
- All repairs are to be made with the machine locked out and tagged out.

Having an increased awareness and stressing maintenance will provide favorable results on bucksaw safety issues. We must make the right decisions. Being Pro-Active greatly reduces the risk of an accident.

### 2016 Safety Meeting Record

Date: \_\_\_\_\_ Company: \_\_\_\_\_

Names and signatures of ALL attendees to be attached.

Conducted by:(signature) \_\_\_\_\_





## Driver Fatality In The Woods

JJ Lemire

Rollovers? Ever been affected by this type of mishap? Most, if not all rollovers are preventable. In a very small number of cases, some rollovers occur due to other vehicles that caused the mishap, while some occur due to equipment failure. In the forest product industry, log trucks experience more rollovers than chip vans. Log trailers have a higher center of gravity than a normal cargo load. It takes **.4g's** (g's - gravitational forces) or less to rollover. A car must exceed 1.3g's compared to 1.1 g's for a pickup truck or .8g's for a SUV for them to rollover. It is extremely easy to exceed the g-forces on a log truck

### Where do rollovers occur:

- Drifting off the pavement onto a soft shoulder
- Making a tight corner
- Striking a curb
- Running into a ditch
- Entering or exiting onto a ramp at excessive speeds
- Going around a curve too fast

Speed is the number one cause of rollovers. Too fast for the road conditions on a good day will cause a rollover. Add rain, ice, sleet or snow to the excessive speed and you will turn your loaded trailer over. **SLOW DOWN** and adjust to weather and road conditions.

The weight of the load when a driver drifts off the pavement onto a soft shoulder, can cause rutting and make it hard to return the vehicle back onto the pavement. Sometimes the driver over reacts and jerks the steering wheel will lead to a rollover. So what can you do?

### Loading a trailer:

- Heavy logs on the bottom
- Loader operator should distribute the weight evenly throughout the bunks
- Make sure tie downs/binders/straps are tight before leaving the deck
- Check tie downs/binders/straps along the route as they will loosen.

### Driving:

- Use caution when turning or changing lanes
- Slow down when entering or exiting onto highways
- Follow speed limit signs going into curves
- Keep the tires on the pavement
- Do not let cell phones or CB radios distract you
- Adjust your speed to the weather conditions
- Give yourself extra time so as not to feel rushed
- Keep following distances so you have time to react to traffic changes

Remember to give yourself adequate time, keep your speed under control and maintain proper following distances. Above all else, keep the truck and trailer on the pavement.

### 2016 Safety Meeting Record

Date: \_\_\_\_\_ Company: \_\_\_\_\_

Names and signatures of ALL attendees to be attached.

Conducted by:(signature) \_\_\_\_\_



Nokian Tyres specializes in forestry tires for the toughest conditions. The Nokian Forest King TRS LS-2 skidder tire features the latest in forestry tire technology like our most cut and crack resistant forestry compound, four wide breakers under the tread area and tire shoulders to protect against punctures and strengthened bead to handle the heaviest loads. All Nokian skidder tires are made in Finland to ensure you have the highest quality tire in the forest.

**nokian<sup>®</sup>**  
**TYRES**

Find out more about Nokian Heavy Tyres and find a dealer near you  
at [nokianheavytyres.com](http://nokianheavytyres.com) or by calling 844-564-7877



GIVE YOUR BUSINESS TO THE BUSINESSES THAT SUPPORT SWPA I

STRENGTH YOU CAN BANK ON  
SINCE 1889



SOUTHEASTERN  
BANK

WWW.SOUTHEASTERNBANK.COM

MEMBER FDIC



**Safety On Site, Inc.**

**Darlene McDonald**

898 Bryant Hill Rd. • Marshallville, GA 31057

(478) 218-9322 Office

(478) 235-2684 Mobile

safetyonsite@windstream.net

**www.mysafetyonsite.com**



RAY ALLEN

Phone: (904) 284-2165

Mobile: (904) 608-8038

LUBRICATION SPECIALISTS

**Commercial Insurance  
Services, Inc.**



**MIKE McCOMBS**

Lincolnton, GA 30817

P.O. Box 448

Bus: 706-359-1499

Home: 706-359-7100



MURRAY OIL SALES, INC.



5775 Old Surrency Road  
Surrency, Georgia 31563

**JEROME MURRAY**

**BO ALDRIDGE**

**J.N. MURRAY**

Line: 227-1708

Cell: 913-278-0140

Home: 512-367-4897

Office: 912-367-3392

Cell: 912-614-8490

Fax: 912-366-9048



**Swamp Fox  
AGENCY, INC**

Commercial Insurers  
Specializing in Construction & Forestry

**RICK QUAGLIAROLI**

Ph: 843-761-3999

P.O. Box 522

Priegoolls, SC 29569

Office: 888-442-5647

Fax: 843-761-6186

**THANK YOU  
2016 SWPA Sponsors**

- |                                       |                                   |
|---------------------------------------|-----------------------------------|
| Allwood Equipment                     | Giant Tire Sales & Service        |
| Bates Hewett & Floyd Insurance Agency | GREC                              |
| Beard Equipment                       | Guffin & Eleam, Inc.              |
| Commercial Insurance Services, Inc.   | Hawkins & Rawlinson               |
| Davis - Garvin Insurance Agency       | Primex Tires                      |
| Dixie Woods                           | Smith & Turner Equipment, Inc.    |
| Flint Equipment                       | Southern Linc                     |
| Forestry Mutual Insurance             | Tidewater Equipment Company       |
| GCR Tires and Services                | TransPower                        |
| Genesis Timber                        | Truck Tire Centers of Chattanooga |
|                                       | Yates Insurance and Real Estate   |







SOUTHEASTERN WOOD PRODUCERS ASSOCIATION INC WWW.SWPA.AG  
PO Box 9 Hilliard, Florida 32046 (904) 845-7133 Fax: (904) 845-7345

## 2017 OUTSTANDING LOGGER OF THE YEAR AWARD

**NOMINATION DEADLINE – 3/17/2017**

Join SWPA in searching for Georgia and Florida's outstanding loggers of the year! Whether you are a forest landowner or industry professional, use this opportunity to nominate a professional timber harvesting business that has exceeded your expectations and is deserving of recognition.

Businesses nominated should be a credit to their profession and consistently demonstrate the **qualities of an exceptional timber harvesting operation**. These include, but are not limited to: compliance with all applicable laws, evidence of safety and loss control programs, equipment maintenance practices, personnel management, environmental considerations, wood security practices, business management, sustainable harvesting and good standing within the community including community activism. **Finally, the business must be a participant in Master Logger (in Florida) or Master Timber Harvester (in Georgia) programs and a resident of the state for which they are nominated. The selection process will place significant emphasis upon evidence of sustainable harvesting and business practices.**

All potential qualified harvesting businesses should be considered, regardless of operation size. Nominations will be reviewed and award recipients selected by the SWPA Joint Logger of Year Committees based on the highest point value attained during the evaluation process. The SWPA Joint Committees include SWPA, industry, associated industry and merchants, and state SFI committee representatives.

**Nominations must contain the following information: business name and business owner's name(s), address, best contact phone numbers, area of operation and a *brief* summary detailing why the nominee should be the 2017 Outstanding Logger of the Year. Anonymous nominations will be accepted provided the nomination package is complete and the nominee has agreed to participate. **The deadline for nominations is March 17, 2017.****

Initial consideration of nominees and site visits will be based on the information provided in the nomination. Prior winners of this award must wait 10 years before becoming eligible for consideration in a current year. SWPA will present the "Outstanding Logger of the Year" award at our Annual Meeting at the Jekyll Island Convention Center in Jekyll Island, Georgia on June 2 - 3, 2017. The Georgia and Florida forestry associations may also choose to recognize recipients at their annual meeting events. For more information, please contact Tommy Carroll at (478) 952-2809.



## 2017 Outstanding Logger of the Year Nomination Florida -or- Georgia

Please print clearly

Timber Harvesting Operation Name: \_\_\_\_\_

Owner(s): \_\_\_\_\_ Area(s) of Operation: \_\_\_\_\_

Address: \_\_\_\_\_ City/ST/Zip \_\_\_\_\_

Phone: \_\_\_\_\_ Mobile: \_\_\_\_\_

Email: \_\_\_\_\_

Nominee Signature: I \_\_\_\_\_ hereby agree to participate in the 2017 Logger of the Year program. (Agreement to participate by phone or fax is acceptable)

Nominator: \_\_\_\_\_

Address: \_\_\_\_\_

Company: \_\_\_\_\_

Phone: \_\_\_\_\_ Mobile: \_\_\_\_\_

Email: \_\_\_\_\_

**Please Note:** Nomination must be accompanied by a *brief* summary detailing why the nominee should be the Florida or Georgia 2017 "Outstanding Logger of the Year". The summary should explain how your nominee demonstrates the following qualities of an exceptional logger in areas listed below along with any other information you would like to present for consideration:

1. Regulatory Compliance Programs and Recordkeeping
2. Business Management  
(planning, personnel, resource and asset management, recordkeeping, character, innovation)
3. Harvesting Practices  
(environmental, utilization, wood security and aesthetic considerations)
4. Community activism and industry advocacy
5. A track record of sustainable harvesting and business practices

# ARE YOU MAKING THE MOST OF YOUR SWPA MEMBERSHIP?

FIND OUT IF **YOU COULD \$AVE** ON GOODS YOU PURCHASE  
EVERY DAY THROUGH SWPA'S PURCHASE PROGRAMS

## SWPA MEMBER TESTIMONIALS...

**R.P. Glass Jr**

**Timber Services of Georgia**

"About a month ago I bought a couple of fuel filters at the NAPA store for another brand at a cost of \$102 and change. Later that day my travel route changed and I was able to go by my Baldwin dealer where I purchased the same two filters for \$47 and change. The SWPA Baldwin Filter program saved me over 50% for the same filters!"

**Jerry Gray**

**Gray Logging Inc.**

"Last month I bought two new SWPA Purchase Program (Primex-30.5, 26 ply) Forestry Tires and saved over \$800.00 on the purchase. I just saved enough to pay my SWPA dues for two years and believe I will save more before this year is out. Thank you SWPA for an excellent member benefit!"



**GPS Fleet Management**

Contact: Jackie Jallick

(727) 674-2850

jackie.jallick@fleetmatics.com

for your SWPA Members Savings benefit with \$100 Rebate back to the your Association

For more info go to:

[www.swpa.ag/](http://www.swpa.ag/)

sponsorships/

purchase-power-program

## 2016 PURCHASE PROGRAM PARTNERS:

### Primex Forestry Tires

#### PRIMEX DEALER LIST

**GIANT TIRES SALES** 3523 US Hwy 67 Whigham, GA 39897 (229)-762-3230  
Rudy Harrelson Cell# (229) 873-1806

**ANDY SMART TIRE** 2901 Creek Street, Middleburg, FL 32068 (904)545-5238  
Andy Smart

**COLEMAN STORE** 7521 Hwy 15 S., White Plains, GA 30678 (706)467-2068  
Kenny Stewart

**GARRETT TIRE** 4720 Weiss Lake Road, Leesburg, AL (256) 526-8172  
Steve or Chris

**GCR TIRES & SERVICE** 3710 Memorial Dr., Waycross, GA 31503 (912) 285-9610

**TRUCK TIRE CENTERS OF CHATTANOOGA** 2036 Polymer Dr. Chattanooga, TN 3742  
Tracy Luther Cell# (256) 996-1960 Office # (423) 892-9983

#### Primex SWPA Qualified Member Pricing Effective June 1, 2016

Size	Ply	Design	Type	SWPA Mbr Cost	Product Code
18.4-26	16	Log Stomper STL LS-2	T.T.	\$1,200.	453509
23.1-26	16	Log Monster LS-2	TBL	\$1,795.	464512
24.5-32	20	Log Stomper FX23 LS-2	T.T.	\$2,250.	450584
28L-26	20	Log Monster LS-2	TBL	\$1,860.	464518
28L-26	20	Log Stomper Extreme LS-2	TBL	\$2,100.	461518
30.5-32	26	Log Monster LS-2	TBL	\$2,300.	464917
30.5-32	26	Log Stomper Extreme LS-2	TBL	\$2,750.	461917
35.5-32	26	Log Monster LS-2	TBL	\$3,400.	464921
35.5-32	26	Log Stomper Extreme LS-2	TBL	\$3,895.	461921
67x3400-25	20	LS Super Flotation Steel HF-4	TBL	\$3,700.	451497
66x4300-25	20	LS Super Flotation Steel HF-4	TBL	\$4,100.	451501
73x4400-32	20	Log Stomper FX HF-4	TBL	\$4,600.	452593

#### • Baldwin Filters

<http://www.baldwinfilter.com/>

Find a dealer or ask us to help you with your current dealer. Call 904-845-7133



**BALDWIN FILTERS:**

**YOU PAY 45% BELOW STORE (RETAIL) PRICE**

For Example: Price Before - \$100.00 Price Now - \$55.00

**\$45.00 Savings on 1 Filter!**



# PRIMEX



Finally, a Forestry Tire  
that's as rugged and  
dependable as you.

**PRIMEX**  
FORESTRY TIRES

**NEW SWPA  
TIRE PROGRAM  
PARTNER**

Primex Forestry is thrilled to have been chosen  
as a new SWPA Tire Program Partner.

Contact SWPA at (904) 845-7133 for more infor-  
mation and to locate participating dealers.

Program starts March 1, 2014

**ATG**  
ALLIANCE TIRE GROUP

For More Information about  
Primex Forestry Tires call  
Alliance Tire Group at 800-343-  
3276 or visit [www.atgtire.com](http://www.atgtire.com).





# Timber Mart-South

## Timber Price Reporting Service

- Southern Hardwood & Pine
- Stumpage & Delivered Prices
- Logging Rates & Biomass Prices
- Quarterly Reports
- Historical Prices
- Market Trends

Tom Harris  
706-542-2832

Jonathan Smith      Sara Baldwin  
706-542-4756      706-542-4760

[www.TimberMart-South.com](http://www.TimberMart-South.com)  
Email: [tmart@uga.edu](mailto:tmart@uga.edu) • Fax 706-542-1670

Daniel B. Warnell School of Forestry & Natural Resources  
The University of Georgia • Athens GA 30602 USA

## Mizell Development, Inc.

P.O. Box 5011 Callahan, FL 32011

*Complete site prep for reforestation  
Forest road construction and maintenance  
Forest land conversion to agricultural use*

Adam J. Mizell  
President

Cell: (904) 545-0611  
Fax: (904) 879-9069  
[adam@mizell@yahoo.com](mailto:adam@mizell@yahoo.com)



## Bandit INDUSTRIES, INC.

Whole Tree Chippers • The Beast® Horizontal Grinders  
Prime Mowers with Forestry Mower and Slang Grinder Attachments  
Hand Fed Chippers • Stump Grinders • Skid Steer Attachments

Contact Allen Hyman today for more information!

J. Allen Hyman  
Skid Steer Operator Sales Representative

[ahyman2@banditchippers.com](mailto:ahyman2@banditchippers.com)  
6750 W. McLeod Rd. • Retts, MI 49340

Office: (800) 952-0178  
Cell: (980) 328-4271

[www.banditchippers.com](http://www.banditchippers.com)

## WWW.SWPA.AG

Membership, Resources,  
Classifieds and more...



# Built Tough

For Demanding Applications

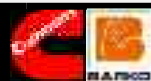


Baldwin Filters has been protecting all types of engine-powered equipment with lube, air, fuel, hydraulic and coolant filters designed to meet the performance requirements of today's equipment for over 75 years.

Baldwin filters are recognized by maintenance professionals worldwide as high quality, reliable and cost-effective products and are backed by a full warranty so you are assured that your equipment is being protected by quality products.

[www.baldwinfilter.com](http://www.baldwinfilter.com)





**877-664-6337**

**"Your Best Choice for Equipment & Parts!"**  
[www.qualityequipandparts.com](http://www.qualityequipandparts.com) or [www.qamparts.com](http://www.qamparts.com)



**Just in: The 4680 BEAST**



**New Bandit 2680 Grinder**



**Free Standing Delimiting Gate!**



Cummins Engine Parts



Stock Up on Seal Kits!



Skidder Seats Air Ride & Mechanical



*"Quality You Can Count on By People You Can Trust Since 1926"*

# GUFFIN & ELEM, INC

*Insurance Programs for the Forestry Industry*

**Insurance is a big part of your business, however you may be missing the most important policy.**

Do you realize the most important piece of equipment your forestry operation has is **Life Insurance** on you or any partners you have?

If something happens to you suddenly can your family operate easily without extra money that **Life Insurance** can provide?

If you or your partner should have something tragic happen, wouldn't you like to know that **Life Insurance** would take care of your families?

This could be a decision that could give you a piece of mind. Think about it.

*We have several Life Insurance companies & can provide a plan for family protection, buy sell, and business protection.*

**Contact us:**

21 Georgia Ave  
 Summerville GA 30747  
 Ph: 706.857.3494 Toll Free: 888.480.6140  
 Fax: 706.857.1714  
[www.guffinandelem.com](http://www.guffinandelem.com)

**Commercial Lines Agents:**

Scott Copeland 706.409.4125 minitover@windstream.net	Dana Black 229.834.7200 dbatwork@bellsouth.net
Julie Croy 706.331.5140 jtcroy@windstream.net	Jackee Wigley 912.347.1984 jackee.guffin@elem.com





## SUPERIOR SUPPORT, MAXIMUM UPTIME.

As a strong and experienced Tigercat dealer, Tidewater sells and services the most complete line of full-tree harvesting equipment. You can always count on the Tidewater team to back you up with the highest quality product support and quick access to Tigercat genuine parts.

Contact your nearest Tidewater dealer today to learn how Tigercat machines deliver maximum uptime and lowest cost per ton.



WALTERBORO, SC  
843.538.3122

NEWBERRY, SC  
803.276.8030

CONWAY, SC  
843.397.9400

ELIZABETHTOWN, NC  
910.247.6391

POLKTON, NC  
704.272.7685

MAXVILLE, FL  
904.289.0806

PERRY, FL  
850.843.8726

BRUNSWICK, GA  
912.265.8760

WAYCROSS, GA  
912.282.9284

HAZLEHURST, GA  
912.375.3317

STATESBORO, GA  
912.601.9924

THOMASVILLE, GA  
229.228.4948

FORSYTH, GA  
478.994.9938

EVERGREEN, AL  
251.578.1812

THOMASVILLE, AL  
334.637.0939

[WWW.TIDEWATEREQUIP.COM](http://WWW.TIDEWATEREQUIP.COM) | [FACEBOOK.COM/TIDEWATEREQUIP](https://FACEBOOK.COM/TIDEWATEREQUIP)

PHONE	519.753.2000
EMAIL	<a href="mailto:comments@tigercat.com">comments@tigercat.com</a>
WEBSITE	<a href="http://www.tigercat.com">www.tigercat.com</a>
SOCIAL	<a href="http://www.facebook.com/tigercat">www.facebook.com/tigercat</a>

**Tigercat**<sup>®</sup>  
Tough • Reliable • Productive

# SWPA "Out of the Woods" ADVERTISING INDEX

Baldwin Filters (Purchase Partner) . . . . . 24	Giant Tire Sales and Service . . . . . 30	Schaeffer's Specialized Lubes . . . . . 19
Bandit . . . . . 24	Guffin & Eleam Insurance Inc . . . . . 25	Southeastern Bank. . . . . 19
Barko . . . . . 2,25	John Deere Forestry with Beard & Flint Equipment. . . . . 15	Swamp Fox Agency Inc . . . . . 19
Bates-Hewett & Floyd . . . . . 12	Knight Forestry Inc. . . . . 2	Tigercat- Tidewater Equipment . . . . . 26
Bitco . . . . . 27	Lane & Associates . . . . . 13	Timber Mart South . . . . . 24
CAT Forestry - RingPower & Yancey Bros. . . . . 4	Maxi-Load. . . . . 12	Trelan Southeast . . . . . 13
Commercial Insurance Services Inc. . . . . 19	Mizell Development Inc. . . . . 24	
Dr. Oscar Dell . . . . . 13	Murray Oil Sales. . . . . 19	
Davis Garvin . . . . . 31	Nokian Tyres. . . . . 18	
Ferrell Timber & Site Prep Inc. . . . . 13	PRIMEX-SWPA (Purchase Partner) . . . . 23	
Foestry Mutual. . . . . 29	Quality Equipment & Parts Inc . . . . 2,25	
GCR Tire . . . . . 32	Safety On Site. . . . . 19	



## Out of the Woods - Quarterly Publication Ad Rates

**Full Page:** Color (full bleed) \$815.00 issue / Grayscale \$675.00 issue  
(8.5" x 11" full bleed ink space)

**Half Page:** Color \$535.00 issue / Grayscale \$405.00 issue  
(8.5" x 5.5" or 4.25" x 11" full bleed ink space)

**1/4 Page:** Color \$405.00 issue / Grayscale \$275.00 issue  
(4" x 5.25" ink space)

**Bus Card:** Color \$405.00 Annually / Grayscale \$335.00 Annually  
(3.5" x 2.1" ink space)

**For more information please contact:**  
the SWPA Office  
PO Box 9, Hilliard, Florida 32046  
(904) 845-7133 Fax: (904) 845-7345  
email: pbennett@swpa.ag



**What YOU do is what WE protect.**

**BITCO knows the forest products business**

For nearly 100 years we've been providing the insurance protection and responsive services needed for wood-related risks.

From workers compensation and general liability to auto and property coverage, you get affordable prices along with safety and security from a financially secure, A+ rated company.

Best of all, you'll experience service from people who know and care about your business.



- Full service branch offices:**
- |            |              |               |
|------------|--------------|---------------|
| Atlanta    | Indianapolis | Oklahoma City |
| Charlotte  | Kansas City  | Pittsburgh    |
| Dallas     | Little Rock  | St. Louis     |
| Denver     | Nashville    | San Antonio   |
| Des Moines | New Orleans  |               |

All programs may not be available in all states.

Insurance contracts are underwritten and issued by one or more of the following: BITCO General Insurance Corporation and BITCO National Insurance Company, rated A+ (Superior) by A.M. Best, A2 Stable by Moody's, and A+ Strong by Standard and Poor's.

1-800-475-4477 | www.BITCO.com







# SWPA MEMBER DOLLARS SUPPORT...

## EDUCATION    LEGISLATION    LEADERSHIP

The Southeastern Wood Producers Association Inc., formed by loggers for loggers in 1990, is the leading advocate for professional loggers in Florida and Georgia. Your membership dues also support the American Loggers Council, which is a national logging association uniting all state logging associations in the United States. The SWPA staff is always available to serve you and answer your questions. Please give us a call to discuss member benefits and to learn about how you can be involved in your association. Together we make a difference.

**2016-2018  
Board of Directors**

**President**  
John Lane  
(912) 267-1861  
**Vice President**  
Scott Gies  
(904) 552-5831  
**Secretary-Treasurer**  
Russel Fowler  
**Chairman of the Board**  
Richard Schwab  
(850) 584-7030

**Staff**  
**Executive Director**  
Tommy Carroll  
(478) 952-2809  
**Administrative Assistant**  
Pam Bennett  
(904) 845-7133

**Board Members**

Eddie Batten  
Joe Burns  
Paul Byrd  
Steve Dixon  
Charles Forte  
Justin Foster  
Mark Fryer  
R. P. Glass Jr.  
Jerry Gray  
Brian Henderson  
Darrell Henderson  
Charles Johns  
Brett Matuszak  
Darlene McDonald  
Randy McKenzie  
John Mullis  
Jimbo Nathe  
Ronnie Pollock  
Tommy Rollins  
Ken Sheppard  
Keith Smith  
Don Snively  
Tim Southerland  
Dillon Stratton  
Coye Webb, Sr.

(904) 845-7133  
Fax: (904) 845-7345  
Email form to:  
pbennett@swpa.ag

**ALL LOGGING COMPANIES**

Member companies are eligible for all SWPA Purchase Power Programs. Member employees may attend any SWPA CLE workshops or SWPA Chapter Meetings at no cost. Your annual dues provides for one full time woods crew and office staff. An additional \$50.00 is due annually for each additional woods crew employed by your operation at the time of your membership renewal.

**PURCHASE PROGRAM MEMBER**

**AMOUNT**  
**\$ 400.00**  
**+ \$50.00\***  
**\*Ea. Addl. Crew\***

**ASSOCIATE MEMBER CATEGORIES**

**Consuming Wood Fiber Companies:**

(Pulp, Kraft, Cellulose, Chip, Mulch & Large Saw mills). All employees eligible for Education rate of \$30 per person for all full day SWPA Workshops. No Charge for District- Chapter Meetings and workshop 4 hours or less.

**\$1,000.00**

**Small Saw Mills, Wood Brokers, Land Management Companies:** All employees eligible for Education rate of \$30 per person for all full day SWPA Workshops, No charge for District –Chapter Meetings and workshops 4 hours or less.

**\$ 500.00**

**Merchant-Vendor Associates:** Business member category only. Education benefits do not apply. No Charge for District-Chapter Meetings. Contact SWPA for further details or to establish an “alliance partner agreement” associated with this membership category.

**\$ 300.00**

**Platinum Associates:** Eligible for Education rate of \$30 per person for all full day SWPA Workshops, No charge for District – Chapter Meetings and workshops 4 hours or less. This is an individual membership not available for Wood Producer - wood fiber hauling companies.

**\$ 200.00**

**Trucking Companies:** Member companies are eligible for all SWPA Purchase Power Programs. Eligible for Education rate of \$30 per person for all full day SWPA Workshops, No charge for District – Chapter Meetings and workshops of 4 hours or less. **PURCHASE PROGRAM MEMBER**

**1-10 Trucks: \$ 250.00**  
**11 - 15 Trucks: \$ 500.00**  
**15+ Trucks: \$1,000.00**

**Basic Associates: Friends of SWPA -** Receive SWPA “Out of the Woods” newsletter subscription and other member information and action alerts via email when provided.

**\$ 50.00**

*All Memberships receive SWPA “Out of the Woods” Newsletter Subscription  
The American Loggers Council represents over 50,000 logging professionals in 28 states. The Southeastern Wood Producers Association is proud to be a member of the American Loggers Council. For more information please contact the ALC office at 409-625-0206 or e-mail at americanlogger@aol.com.*

**Name:** \_\_\_\_\_

**Fax No:** \_\_\_\_\_

**Company Name:** \_\_\_\_\_

**Home Phone:** \_\_\_\_\_

**Address:** \_\_\_\_\_

**Wk Phone:** \_\_\_\_\_

**City:** \_\_\_\_\_ **St.** \_\_\_\_\_

**VISA - Master Card - AMEX Accepted !**

**Zip** \_\_\_\_\_ **County:** \_\_\_\_\_

**Check here if you wish to Call with your Credit Card Information**

**Email Address:** \_\_\_\_\_

**Mail to: SWPA, P. O. Box 9,  
Hilliard, FL 32046 www.swpa.ag**

**Cell Phone:** \_\_\_\_\_

**Check here if you wish to receive text.**

**Date:** \_\_\_\_\_ **Check#:** \_\_\_\_\_





**AN EXPERIENCE-DRIVEN UNDERSTANDING OF THE FOREST INDUSTRY**

*We understand your business. We deliver quality service. We would love to serve you.*



**FM:** Workers' compensation specialist serving logging, sawmill and wood products manufacturing businesses since 1971.

**FM:** Loss control, specialized training, other value-added services

**FM:** Workers' Comp Program endorsed by:

- ◆ Carolina Logger's Assn.
- ◆ NC Forestry Assn.
- ◆ Tennessee Forestry Assn.
- ◆ Virginia Loggers Assn.
- ◆ SC Timber Producers Assn.

**Forestry Insurance Specialists:**

Eddie Campbell—919-770-6132  
Jimmie Locklear—910-733-3300  
Nick Carter—803-669-1003  
Chris Huff—919-810-9485  
Alan Schaefer—912-414-9778



801 Jones Franklin Rd. ◆ Raleigh NC 27606  
[www.forestrymutual.com](http://www.forestrymutual.com)  
Toll-free: 800-849-7788

**Proudly serving NC, SC, VA, TN & GA**





3523 Highway 84 West  
Whigham, GA 39897

Phone # 229-762-3230 • Fax # 229-762-3240

Office Manager Allison Knight

**Call**

**Rudy Harrelson Cell: 229-873-1806**

47 Years in the Tire Industry

**Johnny Knight Cell: 229-413-3500**

**Jason Knight Cell: 229-378-0448**

**Life Time in Forest Industry**

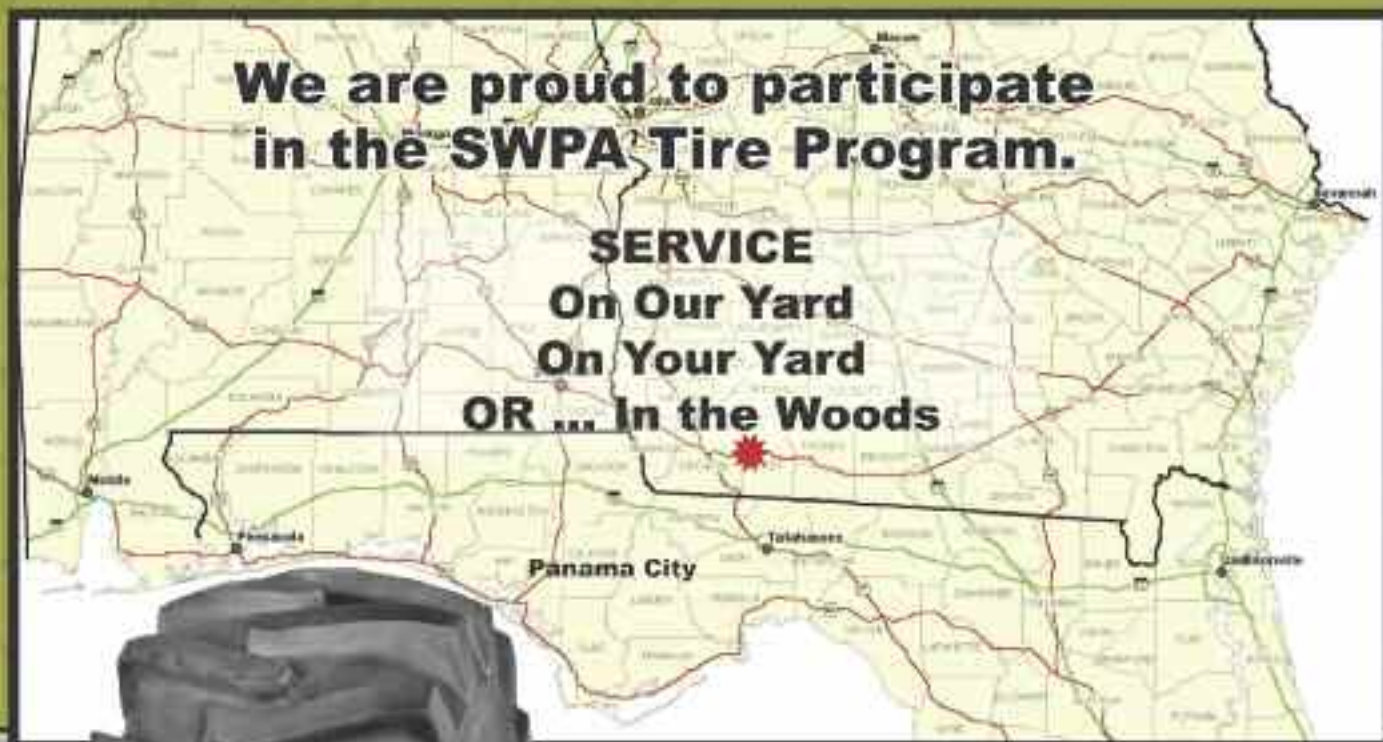
**Oliver  
Retreads**

# Large Inventory Forestry, OTR, and Truck Tires, Tubes and Wheels

## PRIMEX FORESTRY TIRES

**We are proud to participate  
in the SWPA Tire Program.**

**SERVICE  
On Our Yard  
On Your Yard  
OR In the Woods**







 A Neace Lukens/AssuredPartners Company

**803.732.0060**  
**WWW.DAVISGARVIN.COM**

Hunting for a trusted insurance partner that understands your Forestry Business?



Logging Contractors  
Consulting Foresters  
Prescribed Burning  
Directors & Officers  
Landowners

Sawmills  
Standing Timber  
Reforestation Insurance  
Hunt Club Liability  
Timberland Liability

Contact  
Our Forestry Professionals  
John Walker | Matt Hogan





# YOU KNOW WHERE OUR TIRES COME FROM.

## WE KNOW WHERE THEY'RE GOING.

The logging industry is no place for amateurs or tinklers - not for people who work in it and not for the tires they depend on. That's why Firestone tires are built for the masses, toughest, most efficient construction in North America, with patented compounds, unsurpassed strength and durability like no other.

Foreign manufacturers copy the way our tires look, but they don't even close to the way our tires perform. No other brand in the world delivers more experience, value or performance in the forest than Firestone.

Thick OPC® spongy tread  
Designed to withstand the stresses  
of high-horsepower equipment.

Open 27" tread bars  
enhance traction factors

Multiple steel belts under steel  
tread prevent damage and tears.

Thick OPC® spongy tread  
has durable tread pad  
in three ribs.

Heavy-duty flame and cut protectors  
keep tires hot, keep cool tires



### Garden City GA

2841 Hwy 80 W  
Garden City, GA 31408  
(912) 965-9207

### Tallahassee, FL

4702 Capital Circle NW  
Tallahassee, FL 32303  
(850) 222-3130

### Waycross GA

3710 Memorial Drive  
Waycross, GA 31503  
(912) 285-9610



[www.firestonetires.com](http://www.firestonetires.com)